



ULISESevoTM

SPECIAL NEEDS STROLLER



ASSEMBLY MANUAL

Our passion – your independence!



CAUTION! Manufacturer takes responsibility for proper usage of the device only when the product was purchased from qualified Akces-Med employee or at specialized medical store!

CAUTION! AKCES-MED Ltd. reserve the right to introduce technical and trading changes in the content of the instruction without warning.

Medical product first class according to the Regulation 93/42/EWG of European Parliament and Council regarding medical products. For this product the producer issued relevant declaration of conformity. Producer's identification number in the Registration Department of Healing Products, Medical Products and Biocide Products: PL/CA01 04088/W

Akces-Med. Sp. z o.o. Company introduced quality management system ISO 13485 regarding production, sales and service. The system is certified by Det Norske Veritas.





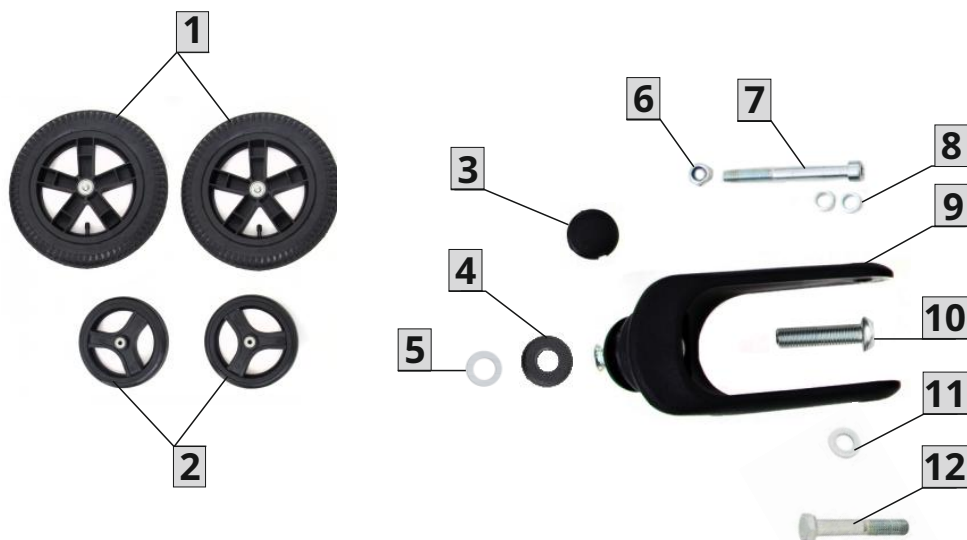
CONTENTS

1.Components.....	4
2.Detailed assembly instruction.....	6
2.1 Stroller frame.....	6
2.2 Footrest.....	7
2.3 Front wheels.....	7
2.4 Rear wheels.....	10
2.5 Seat upholstery.....	11
2.6 Backrest upholstery.....	14
2.7 Headrest.....	16
2.8 5-points belts.....	18





1 COMPONENTS



1 (rear inflatable wheel x 2 pcs.)

2 (front PU wheel x 2 pcs.)

3 (wheel bolt cap x 2 pcs.)

4 (flat washer x 2 pcs.)

5 (large flat washer x 2 pcs.)

6 (self-locking nut x 2 pcs.)

7 (long Allen screw x 2 pcs.)

8 (spacer bushing x 4 pcs.)

9 (front wheel fork x 2 pcs.)

10 (short Allen screw x 2 pcs.)

11 (bolt pad x 2 pcs.)

12 (hexagon head bolt x 2 pcs.)



13 (footrest x 1 pc.)



14 (stroller frame x 1 pc.)





15



16



17



18



19



20



21



22

- 15** (upholstery – seat x 1 pc.)
- 16** (upholstery – backrest x 1 pc.)
- 17** (upholstery – bottom seat x 1 pc.)
- 18** (small Allen screw x 2 pcs.)
- 19** (headrest x 1 pc.)
- 20** (5-point belt strap x 2 pcs.)
- 21** (5-point belt cover with fastening x 1 pc.)
- 22** (long belt with fastening x 1 pc.)





2 DETAILED ASSEMBLY INSTRUCTION

2.1. STROLLER FRAME

In order to unfold the stroller frame (14), you should set the backrest tubes vertically (fig.1). Afterwards, pull the stroller push handle backwards until the folding mechanism snaps. (pic.2, 3).



pic.1



pic.2



pic.3

2.2. FOOTREST

In order to assemble the footrest (13), you should set the footrest tubes vertically (pic. 4). Afterwards, insert the tubes into the stroller frame (pic. 5) and secure them with 2 quick couplings (pic. 6,7).

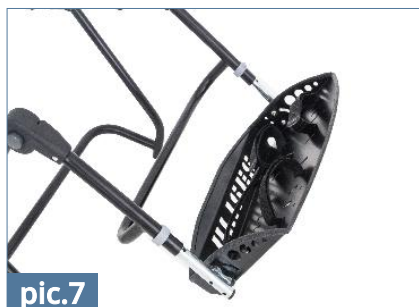


pic.4



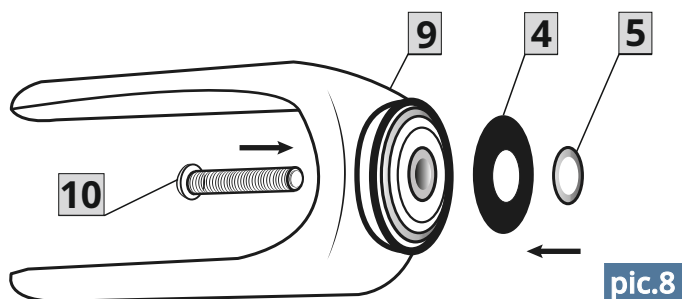
pic.5





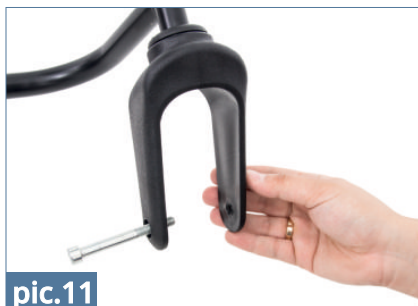
2.3. FRONT WHEELS

The next step is assembly of the front wheels **(2)**. In order to do that, you should, in the correct order, put the flat washer **(4)** and large flat washer **(5)** on the wheel fork **(9)**, and then stick the short screw **(10)** from the bottom (pic.8.). Afterwards, tighten the wheel fork to the stroller frame (pic.9, 10).

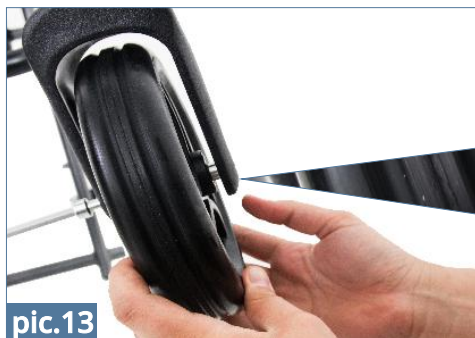




Insert the long Allen screw **(7)** into the round hole as shown in the picture (pic.11). Then, put the spacer bushing **(8)** and PU wheel **(2)** on it (pic 12). The spacer bushing should be placed between the inner side of the wheel fork and wheel.



Put the second spacer bushing **(8)** from the second side (pic.13).





The screw should be tightened by use of Allen wrench (pic. 14) so that the screw head is not fully tightened (pic.15).



Insert the self-locking nut **(6)** into the hexagonal hole as shown in the picture (pic. 16, 17), and then fully tighten the screw.



Repeat the above with the second small wheel.



2.4. REAR WHEELS

The next step is assembly of the rear wheels **(1)**. Insert the hexagon head bolt **(12)** into the hole from the outer side (pic. 18,19). Afterwards, put the bolt pad **(11)** from the other side (pic. 20, 21).



Attach the wheel to the stroller frame (pic. 22,23), tighten the screw (pic. 24), and then attach the wheel bolt cap **(3)** (pic. 25).





Repeat the above with the second large wheel.

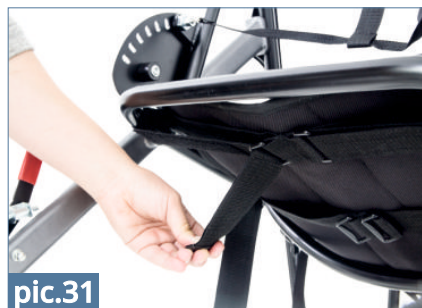
2.5. SEAT UPHOLSTERY

In order to attach the upholstery, you should first assemble the bottom of the seat (**17**) (pic. 28). To do that, put the upholstery on the seat frame. Keep in mind that strap buckles should be facing downwards.





Fasten the upholstery to the frame by use of Velcro straps. The last strap (strap No. 3) should be interlaced through the opening indicated in the picture (pic.29,30), and then fasten all 3 straps with Velcro from the seat underside (pic 31,32). **Make sure that straps cover the seat frame.**



Now you are able to attach the seat upholstery (**15**) as shown in the picture (pic. 33,34).





Fasten the seat upholstery to the stroller frame by use of Velcro straps (pic. 35). **Make sure that straps cover the seat frame.**



pic.35

The straps should be fastened so as to overlap with the opening in the frame. Fasten the strap to the frame by use of small Allen screw **(18)** (pic. 36-39).



pic.36



pic.37



pic.38

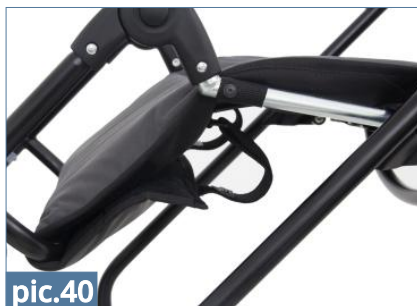


pic.39





In the final step, fasten the Velcro straps under the seat close to the footrest (pic.40).



pic.40

2.6. BACKREST UPHOLSTERY

To prepare the backrest upholstery (16) for attachment, you should first unfasten the zipper in the upper part of the upholstery (pic. 41,42).



pic.41



pic.42

Attach the upholstery to the backrest frame starting from the upper part, in accordance with the following scheme (pic.43,44).



pic.43



pic.44





The upholstery should be fastened behind the backrest by use of Velcro strap (pic 45, 47). **Make sure that straps cover the backrest frame.**



pic.45



pic.46



pic.47

In order to make fastening of the last bottom belt easier, it is recommended to bend the backrest forward. To do that, pull the indicated strap upwards and simultaneously push the backrest forward (pic. 48, 49). Fasten the strap in the same way as the previous ones (pic 50, 51).

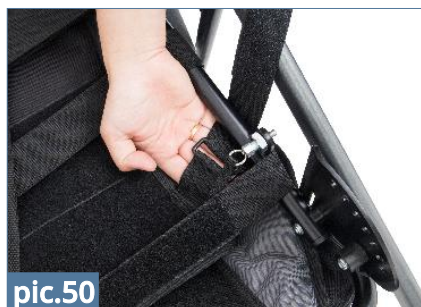


pic.48



pic.49





In the final step, fasten the flap located in the lower part of the backrest using Velcro (pic. 52, 53).



2.7. HEADREST

In order to assemble the headrest **(19)**, you should insert the strings, contained in the headrest, into the upholstery holes at the desired height (pic 54-56). Afterwards, tie the strings from the backrest rear side (pic. 57).





Then, insert the straps with buckle, located next to the headrest, into the upholstery holes (pic. 58) and fasten them behind the backrest (pic. 59).



Afterwards, fasten the zipper in the upper part of the backrest (pic. 60, 61).





2.8. 5-POINT BELTS

In order to attach the 5-point belts, you should first attach the long belt with fastening **(22)** (pic. 62, 63). The scheme below shows the proper attachment of the belt. **By pulling the belt, make sure that it is properly attached and that does not come out of the plastic holder located on the seat.**



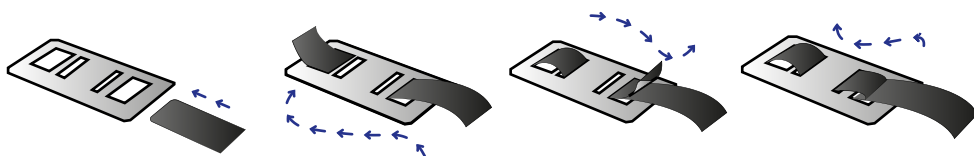
pic.62



pic.63



pic.64



Afterwards, attach the 5-point belt straps **(20)** to the backrest at the desired height (pic. 65, 66). The straps should be secured by use of the knob.



pic.65



pic.66





Attach the 5-point belt cover (**21**) onto the straps (pic.67).

Then, insert the straps into the seat belt fastening (pic. 68, 69).



pic.67



pic.68

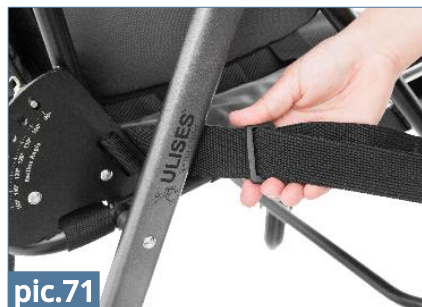


pic.69

The ends of the straps have to be interlaced through the triangular elements located at the sides of the stroller (pic. 70), and then insert their ends into the regulator (pic 70, 71).



pic.70



pic.71



pic.72





ORTHOPAEDIC DEVICES MANUFACTURER



Akces-MED Sp. z o.o.
Jasionka 955B
36-002 Jasionka
tel. (17) 864 04 77

www.akces-med.com

e-mail: export@akces-med.com

Authorised Dealer



Date of issue: **22.09.2016**

The last update: **22.09.2016**

Our passion – your independence!