

# MEYRA<sup>®</sup>

## The Motivation.

Please indicate in any case the model and frame number or the vehicle identification number (Fz-I-Nr.) for every order!



## Spare parts list

### **HURRICANE 1.880**

**Model 1.880**

**a**



**HURRICANE 1.880 / a**  
**Table of contents****MEYRA®**  
The Motivation.

<b>Introduction</b>	4
<b>Order specimen</b>	5
<b>01 Frame</b>	
-Frame	6
<b>05 Steering fork</b>	
-Steering fork	7
-Support wheels	7
-Castor	8
<b>06 Drive wheels - tyre</b>	
-Drive wheels - tyre	9
<b>Accessories</b>	
-Accessories	10

Exact specifications are required for your spare parts' orders. Only then we can guarantee that you will receive the correct spare part. All MEYRA -wheelchairs are manufactured according MEYRA -component group system.

## Assembly group outline

Component unit 01: Frame	Component unit 12: Crossbrace
Component unit 03: Steering	Component unit 15: Electrical system
Component unit 04: Drive	Component unit 16: Working table
Component unit 05: Pressure Brake	Component unit 17: Support wheels
Component unit 06: Chassis	Component unit 20: Seat cushion
Component unit 07: Backrest	Component unit 24: Other Codes
Component unit 08: Seat	Component unit 26: Revetment
Component unit 09: Armrest	Component unit 98: Accessories and small parts
Component unit 10: Leg support	Component unit 99: Circuit diagrams

The index lists different versions of an assembly group, therefore you will find the spare part you are searching for quickly and precisely.

### Note:

The assembly group outline also includes assemblies that do not apply to your model.

## Liability/ guarantee for foreign products

Do not use any foreign products as spare parts or accessories for MEYRA -Wheelchairs. Foreign products may affect the operational reliability of the wheelchair, even if the foreign products have not been tested by TÜV or another official authority (General Type Approval). The scope of testing may not always be comprehensive enough.

**MEYRA does not accept any liability or guarantee for foreign products used as spare parts or accessories as well as for damages and accidents caused by exchange or installation of such parts.**

## Safety instructions for the use of spare parts

- When exchanging parts only use components corresponding to the wheelchair model and Code number.
- Please check after receipt if the spare part received is the same you ordered!
- Only authorized dealers or specialized workshops are allowed to carry out repairs on the wheelchair.
- Please take a test drive after repair of the wheelchair. Pay attention to unusual noises and check:
  - Braking ability
  - Steering ability
  - the straight running.

## Abbreviations used

In the bills of material you will find following abbreviations:

AT means exchange components

The parts (articles or standard parts) marked with a letter can be reused after inspection!

## Special features

Position numbers marked with a letter refer to parts not represented (e.g. for the opposite side).

## Order specimen

To establish your order examples please proceed as follows.

1. **Type/Model**  
Please take the type number from the instruction manual, the delivery note or the type plate.
2. **Manufacturing year and vehicle ID no.**  
Read off the year of construction and the vehicle identification number from the type plate, e.g.:  
**Year of construction: 97/12**  
**Vehicle ID No. (Fz-I-Nr.): 5678901**
3. **Component unit**  
Allocate the defective part to an assembly group (see assembly group outline).
4. **Code-No.:**  
Compare the code numbers of delivery note with the Code list of the corresponding assembly group. Code-No.: 626 backrest height 30cm
5. **Look up representation of the assembly group chosen with corresponding Code No.**  
The page where you can find the required representation and bills of material is indicated in the table of contents after the code number.
6. **Article-No:**  
A position number is indicated on the spare part that is to be ordered enabling you to read off the corresponding article number from the bill of material.
7. **Determine the quantity**  
Determine number of component units to be replaced.  
  
**Remark:**  
The number of pieces indicated in the bills of material correspond to the number of component units used in the assembly group (left and right wheelchair side).
8. **Determine the description**  
Read off the corresponding designation from the bill of materials.
9. **Determine the colour**  
Please take the colour code from the delivery note.
10. **Spare parts order:**  
For a correct order please indicate all data.

**Watch for the correct specifications on your order; Only then we can guarantee that you will receive the correct spare part.**

### Attention!

Subsequent changes to the wheelchair as well as arrangements with customers relating to the assembly group to be repaired have to be stated in your order.

### Important information!

If any modifications have been made to the wheelchair, the specialized dealer is required to enclose the appropriate code no. as well as the date of the modifications, along with the operating instructions for the wheelchair. This ensures that no incorrect details will be given for future orders of spare parts. **Original- MEYRA -spare parts!**

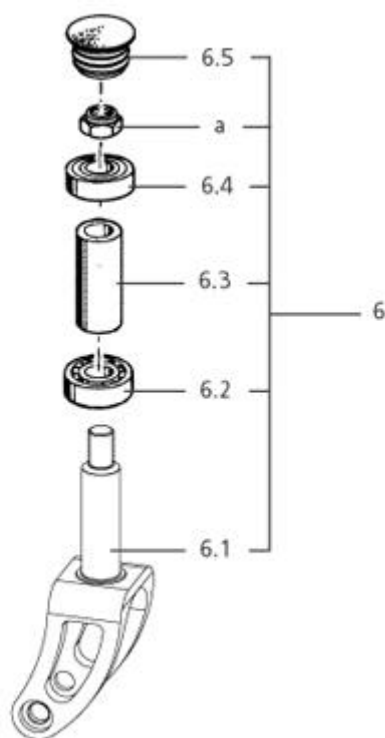


Sub Unit: Frame			
Item	Article-No:	Pc	Description
-	205 659 000	1	SEAT POST CLAMP D=34.9 (AXLE BUSHING REC. CLAMP)
-	1 058 656	2	ADAPTER SLEEVE
Bracket cushion			
-	1 061 051	1	BRACKET CUSHION SIZE L
-	1 061 050	1	BRACKET CUSHION SIZE M
-	1 061 049	1	BRACKET CUSHION SIZE S
Back support			
7	1 059 958	1	BACK ACC. TO SPECIFICATION
-	1 061 054	1	LEATHER CAP FOR BACK ACC. TO SPECIFICATION - CODE 576
Seat			
8	1 059 957	1	SEATBELT ACC. TO SPECIFICATION
-	1 061 074	1	CARBON PLATE FOR SEAT CODE 948
Seat cushion			
20	1 059 959	1	SEAT CUSHION ACC. TO SPECS
Leg supports			
10	1 058 671	1	CARBON-FOOT SHELL CODE 312 SHOE SIZE VERSION 1 (40-44)
10	1 058 672	1	CARBON-FOOT SHELL CODE 313 SHOE SIZE VERSION 2 (45-50)

# HURRICANE 1.880 / a

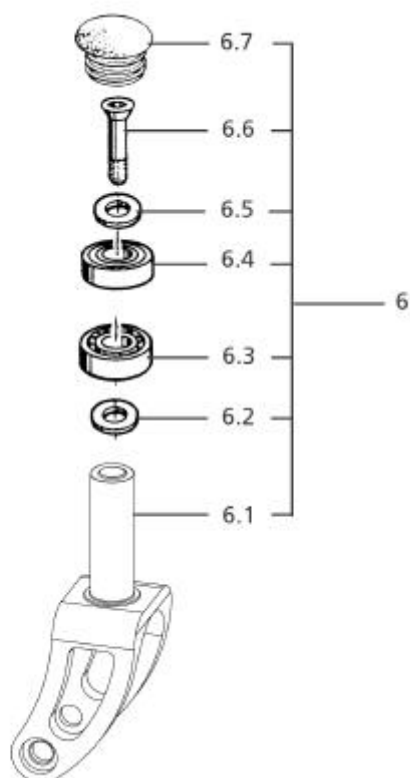
## Component unit: Steering fork

**MEYRA®**  
The Motivation.



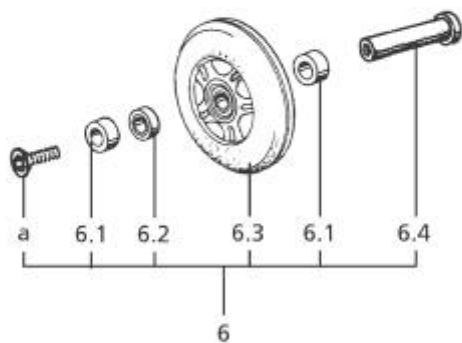
### Sub Unit: Steering fork

Item	Article-No:	Pc	Description
-	207 861 400	1	Shim 20x28x1 DIN988
-	207 420 400	1	Shim
-	207 420 300	1	Shim
6.2	206 507 600	1	GROOVED BALL BEARING DIN 625 62202.2RSR
6.3	1 058 096	1	DISTANCER SLEEVE
6.4	206 507 500	1	GROOVED BALL BEARING DIN 625 6902-2RS
6.5	1 058 730	1	SEALING PLUG
a	207 322 100	1	Locknut DIN 980/8 M10
-	207 025 400	1	Locking ring, 28x1,2 DIN472
-	206 601 500	1	ROUND GASKET 16X3.5 NBR80 DIN 3730
-	207 330 500	1	Washer DIN 125 B10,5
<b>Lenkgabel 60mm</b>			
6	5 006 313	1	WHEEL FORK ASMB. HEIGHT 60MM FOR CODE 4958
6.1	1 058 727	1	FORK HEIGHT 60MM FOR CODE 4958
<b>Lenkgabel 70mm</b>			
6	5 006 314	1	WHEEL FORK ASMB. HEIGHT 70MM FOR CODE 4957
-	1 058 726	1	FORK HEIGHT 70MM FOR CODE 4957
<b>Lenkgabel 80mm</b>			
6	5 006 315	1	WHEEL FORK ASMB. HEIGHT 80MM FOR CODE 4956
-	1 058 094	1	FORK HEIGHT 80MM FOR CODE 4956



### Sub Unit: Support wheels

Item	Article-No:	Pc	Description
6	5 006 316	1	SUPPORT CASTOR ASMB
6.1	1 058 720	1	FORK FOR SUPPORT CASTOR
6.2	1 058 666	2	DISTANCER RING 19X15.1X2.5 MM
6.3	206 507 600	1	GROOVED BALL BEARING DIN 625 62202.2RSR
6.4	206 507 500	1	GROOVED BALL BEARING DIN 625 6902-2RS
6.5	1 058 665	3	DISTANCER RING 19X15.1X5.0 MM
6.6	1 058 095	1	TAPER SCREW M 6 X 20
6.7	205 212 206	1	Wheel cap
<b>Code 661; Support castor cushion</b>			
-	1 061 053	1	SUP. CASTOR CUSHION FOR CODE 661 - 1 PIECE
<b>Code 712; Support castor cushion (double castor)</b>			
-	1 061 052	1	SUP. CASTOR CUSHION FOR CODE 712 - 1 PAIR



**Sub Unit: Castor**

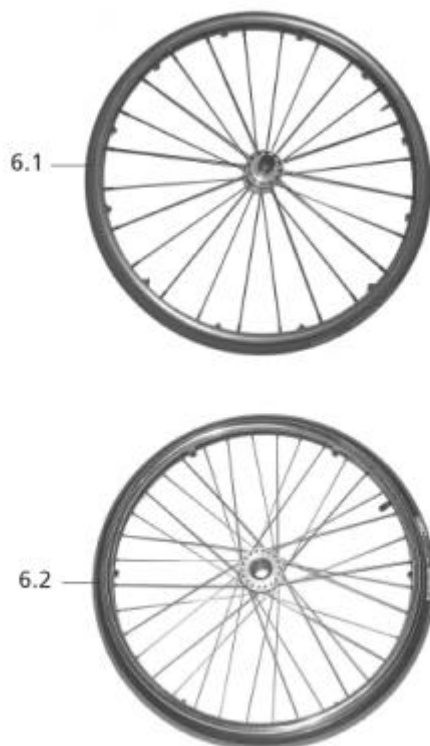
Item	Article-No:	Pc	Description
6.1	1 059 072	2	DISTANCER RING 14X8.5X2.9 MM
6.2	206 504 400	2	Deep groove ball bearing Din 625
6.4	1 058 670	1	STEERING WHEEL BOLT 8X35
a	209 005 400	1	Fillister flat head screw, M6x12
-	1 028 667	1	Distance bush
<b>Code 4956; Skater castor reinforced 80mm</b>			
6	5 006 318	1	STEERING CASTOR ASMB. D=80MM CODE 4956
6.3	5 005 998	1	Bib / flap
<b>Code 4957; Skater castor reinforced 70mm</b>			
-	5 006 319	1	STEERING CASTOR ASMB. D=70MM CODE 4957
-	206 272 300	1	CASTOR D=70MM CODE 4957 (BLACK)
<b>Code 4958; Skater castor reinforced 60mm</b>			
-	5 006 320	1	STEERING CASTOR ASMB. D=60MM CODE 4958
-	206 272 400	1	CASTOR D=60MM CODE 4958 (BLACK)



## HURRICANE 1.880 / a

### Component unit: Drive wheels - tyre

**MEYRA®**  
The Motivation.



#### Sub Unit: Drive wheels - tyre

Item	Article-No:	Pc	Description
-	206 228 900	1	QUICK REL. AXLE WITH BUTTON
<b>Code 61; Wheel size 24"</b>			
-	206 120 801	1	SPORT WHEELS BLUE "TYRE 24 X 1"" (IRC)"
-	206 121 201	1	"TUFO-WHEELS 24X1"" (TYRE BLUE)
-	206 120 804	1	SPORT WHEELS RED "TYRE 24 X 1"" (IRC)"
-	206 115 400	1	Sport hall tyres, 24 x 1"
-	206 117 102	1	Blanket / casing, 24 x 1" grey
-	206 111 400	1	Hose / inner tube, 24 x 1"
-	206 115 102	1	Blanket / casing, 24 x 1 3/8" grey, Code 37-540
-	206 109 400	1	Hose/inner tube 24 x 1 3/8" Code 37-540, schrader valve
<b>Code 62; Wheel size 25"</b>			
-	206 121 001	1	SPORT WHEELS BLUE "TYRE 25 X 1"" (IRC)"
-	206 121 301	1	"TUFO-WHEELS 25X1"" (TYRE-BLUE)
-	206 121 004	1	SPORT WHEELS RED "TYRE 25 X 1"" (IRC)"
<b>Code 68; Wheel size 26"</b>			
-	206 120 901	1	SPORT WHEELS BLUE "TYRE 26 X 1"" (IRC)"
-	206 121 401	1	"TUFO-WHEELS 26X1"" (TYRE-BLUE)
-	206 120 904	1	SPORT WHEELS RED "TYRE 26 X 1"" (IRC)"
-	206 115 500	1	Sport hall tyres, 26 x 1"
-	206 120 202	1	"Tyre 25-590 (26X1"" grey high pressure 0331"
-	206 113 900	1	Tube 26 X 1 AV straight 0360
-	206 100 802	1	Blanket / casing, 26 x 1 3/8" grey, Code 37-590
-	206 108 500	1	Hose / inner tube, 26 x 1 3/8"

#### Sub Unit: Drive wheels - tyre

Item	Article-No:	Pc	Description
<b>Code 63; Wheel size 28"</b>			
-	206 121 501	1	"TUFO-WHEELS 28X1"" (TYRE-BLUE)
-	206 119 402	1	"TYRE 28 x 1""
-	206 113 700	1	TUBE 28x13/8x11/8" (WITH AUTOM. VALVE)
-	207 300 200	6	Cheese head screw, DIN 912 8.8 M5x12
-	207 322 000	6	Locknut, DIN 980/8, M5
<b>Handrims</b>			
-	205 630 100	1	Handrim 24", with 6 holders
-	205 631 200	1	Handrim 24", with 6 holders
-	1 059 573	1	HANDRIM 25"" WITH 6 FASTENERS STAINLESS STEEL
-	1 059 574	1	HANDRIM 25"" WITH 6 FASTENERS TITANIUM
-	205 630 200	1	Handrim 24", with 6 holders
-	205 631 300	1	Handrim 26", with 6 holders
-	1 053 140	1	HANDRIM 28"" WITH 12 FASTENERS TITANIUM (PIECE - OFFENCE)
-	1 053 139	1	HANDRIM 28"" WITH 6 FASTENERS STEEL (PIECE - OFFENCE)
<b>Hand and spoke guard (incl. fixing material)</b>			
-	206 954 200	12	CABLE BAND T 30 BLACK
-	1 061 265	1	"SPOKE GUARD SPINERGY 24"" TRANSPARENT
-	1 061 266	1	"SPOKE GUARD SPINERGY 25"" TRANSPARENT
-	1 061 267	1	"SPOKE GUARD SPINERGY 26"" TRANSPARENT
-	1 058 673	1	SPOKE GUARD SPINERGY 28"" TRANSPARENT

#### Sub Unit: Drive wheels - tyre

Item	Article-No:	Pc	Description
<b>Code 61; Wheel size 24"</b>			
-	5 005 138	2	Drive wheel, compl., 24"x1", code 61-485-489-493
-	5 005 142	2	Drive wheel, compl., 24"x1", code 61-445-485-489
<b>Code 68; Wheel size 26"</b>			
-	5 005 141	2	Drive wheel, compl., 26"x1", code 68-485-490-493
-	5 005 144	2	Drive wheel, compl., 26"x1", code 68-445-485-489
-	5 005 145	2	Drive wheel, compl., 26"x1", code 68-445-485-490
<b>Code 63; Wheel size 28"</b>			
-	5 006 184	2	"DRIVE WHEEL 28"" CODE 63-445-486 (12 FASTENERS)
-	5 006 185	2	"DRIVE WHEEL 28"" CODE 63-486-493 (6 FASTENERS)
<b>Attention! When ordering wheels the following data is always required. 1. Trye colour 2. Handrim distance 3. Rim size</b>			
-	5 006 321	2	DRIVE WHEEL, COMPLETE (PRICE ACC. TO VERSION/COST)
6.1	0	1	Spinergy wheel
6.2	0	1	fixed wheel
-	5 006 322	1	ADAPTER-SET FOR WHEEL AXLE (1 PAIR)

**Sub Unit: Accessories**

Item	Article-No:	Pc	Description
–	1 058 657	2	ADAPTER
			<b>Code 316; Leg fixation</b>
–	1 028 865	1	Leg positioner, code 316, compl.
			<b>Code 362; Leg fixation strap</b>
–	1 051 503	1	LEG FIXATION STRAP CODE 362 SIZE S 90-100 CM
–	1 051 504	1	LEG FIXATION STRAP CODE 362 SIZE M 100-110 CM
–	1 051 505	1	LEG FIXATION STRAP CODE 362 SIZE L 110-120 CM
–	1 051 506	1	LEG FIXATION STRAP CODE 362 SIZE XL 120-130 CM
			<b>Code 659; Breast belt Rugby version</b>
–	1 053 216	1	CHEST STRAP SIZE S
–	1 053 217	1	CHEST STRAP SIZE M
–	1 053 218	1	CHEST STRAP SIZE L
			<b>Code 911; Special pump for wheelchairs with indoor-sports wheels</b>
–	205 542 100	1	Manually-operated compressor, code 911
–	206 125 600	1	Valve reduction piece
			<b>Code 962; Backpack "Life"</b>
–	205 642 506	1	Universal rucksack, Code 962





MEYRA Wilhelm Meyer Vertriebsgesellschaft mbH

Company address:  
Meyra-Ring 2  
D-32689 Kalletal-Kalldorf

Postal address:  
Postfach 1703  
D-32591 Vlotho

Tel.: (49) 5733 922-333  
Fax.: (49) 5733 922-9333  
Email: [info@meyra.de](mailto:info@meyra.de)  
[www.meyra.de](http://www.meyra.de)