

LEVO Dealer:

Date:

Dealer reference / Client name:

Anglikerstrasse 20
CH-5610 Wohlen
Phone: +41 56 618 44 11
Fax: +41 56 618 44 10
e-mail: office@levo.ch

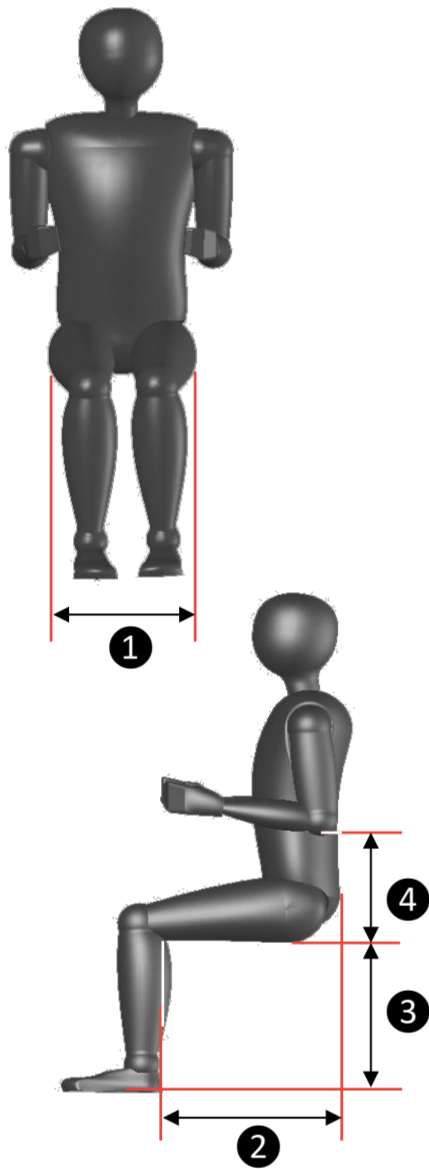
Order number:

Standard configuration 60.001.7201

- Power Base: width 63 cm; length 105 cm (incl. footplate)
- E/E Wheelchair with 4 active wheels and "Low shearing system"
- Seat support plate
- Seat height 48 cm
- V-Trak Axxis low back, 40 cm/16" high
- Quick release for reclining back
- Flip-up armrests
- VR2 control system from PG Drives Technology
- 48 Ah Batteries and battery charger
- Standard colors: red, yellow, blue or black
- Flip-up footrest side- and backwards with non slip surface
- Chest strap and knee support pro
- 8" single rear wheel castors
- Vehicle tie-down locations



Anthropometric Data



Please measure the anthropometric data as shown. If possible, the user should be in a sitting position and wearing shoes.

1	Hip width
Please check the correct box according to the measured hip width in a sitting position:	
32 cm	<input type="checkbox"/>
52 cm	<input type="checkbox"/>
Seat width:	
32 cm	<input type="checkbox"/> Option
36 cm	<input type="checkbox"/> Option
40 cm	<input type="checkbox"/> Option
44 cm	<input type="checkbox"/> Option
48 cm	<input type="checkbox"/> Option
52 cm	<input type="checkbox"/> Option
2	Upper leg length
Please fill in the measured upper leg length:	
38 cm	<input type="checkbox"/>
66 cm	<input type="checkbox"/>
3	Lower leg length
Please fill in the measured lower leg length:	
24 cm	<input type="checkbox"/>
44 cm	<input type="checkbox"/>
If the lower leg length is between 45 and 50 cm, the C3 is available with a 6 cm higher seat height. The seat height is not adjustable. Please check the box accordingly.	
	<input type="checkbox"/> Option
4	Elbow height
Standard armrest height is 22 cm	
17 cm	<input type="checkbox"/>
26 cm	<input type="checkbox"/>
User weight	
The weight of the user determines the force of the gas springs. The maximum user weight is 140 kilograms. Please fill in the box.	
0 - 60 kg	<input type="checkbox"/> 1200 N
60 - 100 kg	<input type="checkbox"/> 1700 N
100 - 140 kg	<input type="checkbox"/> 2100 N
	<input type="checkbox"/> kg

Controls



1	VR2 Control system:	
- Standard control system		<input type="checkbox"/> Standard
- 90 A Power module		
- Max. 2 actuators		
- Controls lights		
- Programmable		
2	R-Net control system "Standard":	
- Color LCD Joystickmodule		<input type="checkbox"/> 60.072.0010
- 120 A Power module		
- Max. 6 actuators, multiple axes		
- Controls lights		
- Fully programmable, multiple profiles		
- Expandable		
3	R-Net control system "XL", as R-net control system "Standard" with the following extras :	
- 3.5" VGA color display		<input type="checkbox"/> 60.072.0020
- Paddle switches for on/off, profile/mode and speed		
- Metal case		
- Loudspeaker instead of a buzzer for a louder horn		

Joystick position



- ① Swing-away, offers more space for transfers and allows to drive closer to tables
- ② Joystick protection guard, shock protection for joystick, protects the users hands

Right	Standard
Left	Option

	60.005.7210
	60.012.6860

Attendant Controls



VR2 Attendant control
R-Net Attendant control

	32.072.0140
	32.068.1850

For special controls, see our special controls order form.

Speed

6 km/h
8 km/h
10 km/h

	Option
	Option
	Standard

Stability*



Gyro module, only available for R-net control system

	32.072.0400
--	-------------

- Perfect control on cambers
- Straight line driving over obstacles
- Eliminates spin-out and fish-tailing

* This option is only available in Europe

Batteries

48 Ah
73 Ah
Without batteries, be aware net price is lower after discount
Without charger, be aware net price is lower after discount

	Standard
	60.006.7210
	60.106.6810
	60.111.6710

Frame color

Red
Yellow
Blue
Black

	Standard
	Option
	Option
	Option

Blue metallic
Green metallic
Red metallic
Silver metallic

	60.008.0020
	60.008.0020
	60.008.0020
	60.008.0020

Orange reflex
Lemon reflex
Silver reflex

	60.008.0030
	60.008.0030
	60.008.0030

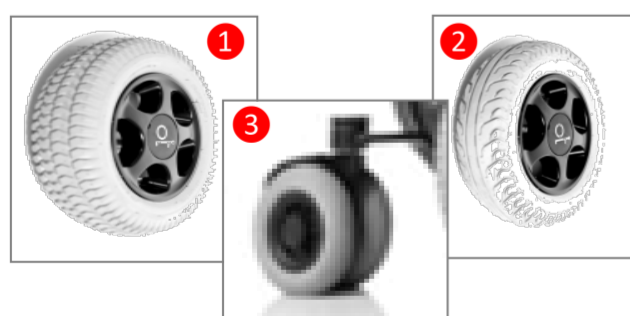
Traffic white

RAL: 9016	60.008.0010
-----------	-------------

Other RAL color

RAL: _____	60.008.0010
------------	-------------

Wheels



- ① Block profile drive wheels
- ② V-profile drive wheels
- ③ 7" twin rear castors

	Standard
	Option

	60.002.0140
--	-------------

Lights



Lights and indicators for outdoor use

	60.012.7220
--	-------------

Seating



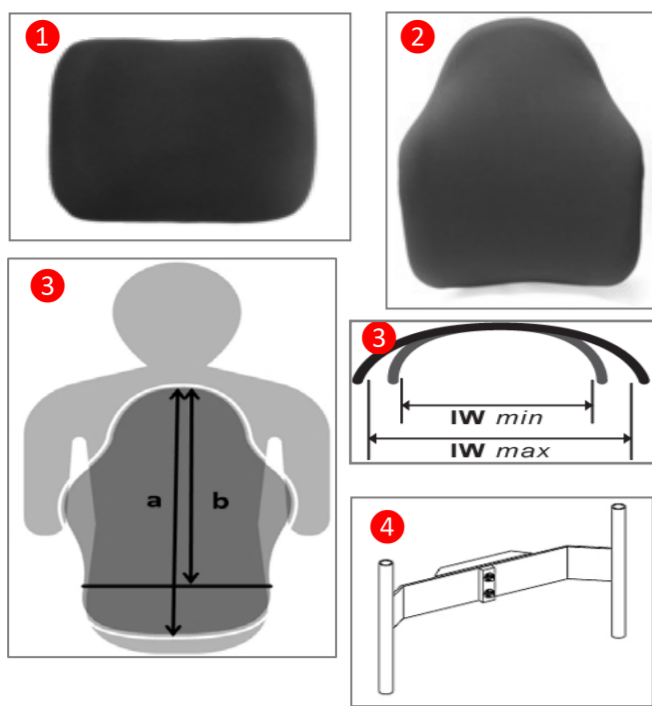
Tilt in space 0 - 35°

	60.012.7210
--	-------------

Reclining backrest, only in combination with R-Net

	60.009.0150
--	-------------

Backrest, The V-Trak Axxis low backrest is delivered with the chair as a standard feature



- ① V-Trak Axxis low backrest, height 40 cm/16"
- ② V-Trak Axxis high backrest, height 61 cm/24"
- V-Trak Axxis reduced height backrest, height 31 cm/12"
- LEVO Full Back system, not possible with the seat width 32 cm

	Standard
	60.009.0080
	60.009.0070
	Option

- ③ V-Trak Axxis Deep contour

Size ▶	M	L	XL	XXL
Type ▼	inside 26 - 37 cm	inside 30 - 40 cm	inside 33 - 46 cm	inside 35 - 52 cm
a High				
b Reduced height				

- ④ Third party backrest conversion bracket, *please choose the correct size*

32 - 36	32.072.0351
40 - 44	32.072.0352
44 - 52	32.072.0353

Without backrest shell, *be aware net price is lower after discount*

	60.009.0110
	60.009.0130
	60.109.7210

Seat cushion, with memory foam depending on the seat depth and seat width incl. cover



Seat width ▶	32	36	40	44	48	52
Seat depth ▼						
35, 37, 39 cm	30.103.5531	30.103.5532	30.903.5535	30.903.5531	30.903.5538	on request
41, 43, 45 cm	30.903.5532	30.103.5533	30.103.5534	30.103.5539	30.903.5536	30.903.5537
47, 49, 51 cm	30.903.5533	30.103.5535	30.103.5536	30.103.5541	30.103.5542	30.103.5549
53, 55, 57 cm	on request	30.903.5534	30.103.5537	30.103.5543	30.103.5544	30.103.5545
59, 61, 63 cm	on request	on request	30.103.5538	30.103.5546	30.103.5547	30.103.5548

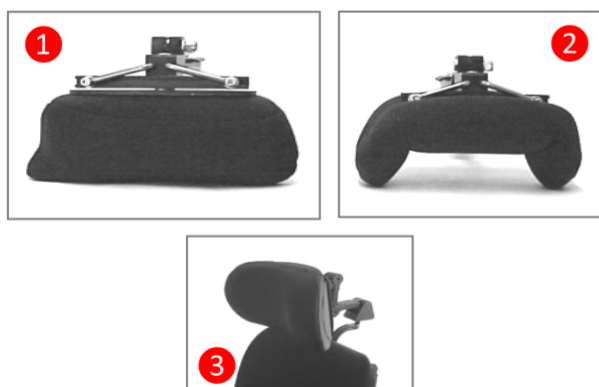
Seat cushion cover

Seat width ▶	32	36	40	44	48	52
Seat depth ▼						
35, 37, 39 cm	30.103.6211	30.103.6212	30.903.6215	30.103.6220	on request	on request
41, 43, 45 cm	30.903.6212	30.103.6213	30.103.6214	30.103.6219	30.103.6235	30.103.6230
47, 49, 51 cm	30.903.6213	30.103.6215	30.103.6216	30.103.6221	30.103.6222	30.103.6229
53, 55, 57 cm	on request	30.903.6214	30.103.6217	30.103.6223	30.103.6224	30.103.6225
59, 61, 63 cm	on request	on request	30.103.6218	30.103.6226	30.103.6227	30.103.6228

Seat cushion cover urin proof for all seat depths and widths

	30.903.6230
--	-------------

Headrest



- ① V-Trak headrest standard, *only in combination with V-Trak Axxis backrest*
- ② V-Trak headrest winged, *only in combination with V-Trak Axxis backrest*
- Track extension for V-Trak head support, *only in combination with V-Trak Axxis backrest*
- ③ Stealth headrest 15 x 8 cm, *only in combination with LEVO Full Back*
- Stealth headrest 20 x 15 cm, *only in combination with LEVO Full Back*
- Stealth headrest 25 x 15 cm, *only in combination with LEVO Full Back*

	02.067.116
	02.067.117
	02.009.0028
	02.009.0602
	02.009.0603
	02.009.0604

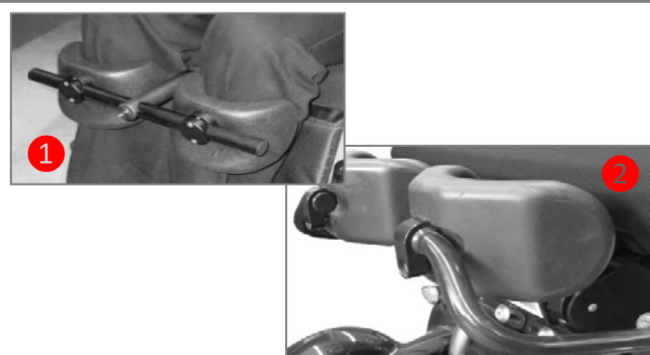
Lateral supports & hardware, only in combination with LEVO Full Back



- Stealth lateral support, fixed, 9 x 13.3 cm
- Stealth lateral support, fixed, 9 x 13.3 cm
- Stealth lateral support, fixed, 9.5 x 14.6 cm
- Stealth lateral support, fixed, 9.5 x 14.6 cm
- Stealth lateral support, swing-away, 9 x 13.3 cm
- Stealth lateral support, swing-away, 9 x 13.3 cm
- Stealth lateral support, swing-away, 9.5 x 14.6 cm
- Stealth lateral support, swing-away, 9.5 x 14.6 cm
- Stealth lateral support, swing-away, 10.8 x 16.5 cm
- Stealth lateral support, swing-away, 10.8 x 16.5 cm

Right	02.009.0701
Left	02.009.0702
Right	02.009.0801
Left	02.009.0802
Right	02.009.0902
Left	02.009.0903
Right	02.009.0904
Left	02.009.0905
Right	02.009.0906
Left	02.009.0907

Knee support



- ① Knee support Pro
- ② Knee support Integral
- Extension for Integral +100 mm

Size S (10 - 12 cm)	Standard
Size M (14 - 16 cm)	Standard
Size S (10 - 12 cm)	60.011.0040
Size M (14 - 16 cm)	60.011.0040
	Option

Accessories



- ① Skirt guard
Skirt guard

Right		32.072.0021
Left		32.072.0022

- ② Upper leg support
Upper leg support

Right		32.072.0031
Left		32.072.0032

Holder to skirt guard and upper leg support

32	36	40	44	48	52
32.072.0151	32.072.0152	32.072.0153	32.072.0154	32.072.0155	32.072.0156



- ③ Chest role

32	36	40	44	48	52
32.072.0041	32.072.0042	32.072.0043	32.072.0044	32.072.0045	32.072.0046



- ④ Foot guide

Small	Right		32.069.95
Small	Left		32.069.96
Large	Right		32.070.0040
Large	Left		32.070.0041



- ⑤ Push handle bar

	32.072.0090
--	-------------



- ⑥ Rearview mirror

Right		32.072.0050
Left		32.072.0050

- ⑦ Swing-away table tray

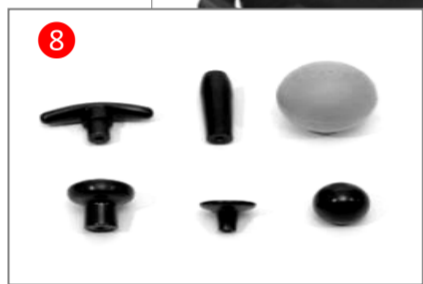
32 - 40		32.072.0011
44 - 52		32.072.0012

Mounted on the opposite side of the joystick position

Right	
Left	

Quick release kit for seat depth and footrest position adjustment

	60.004.7200
--	-------------



- ⑧ Joystick top

T-bar		20.067.22
Stick		20.067.23
Softball		20.067.24
Mushroom		20.067.25
Chin		20.067.26
Ball		20.067.27

Remarks